

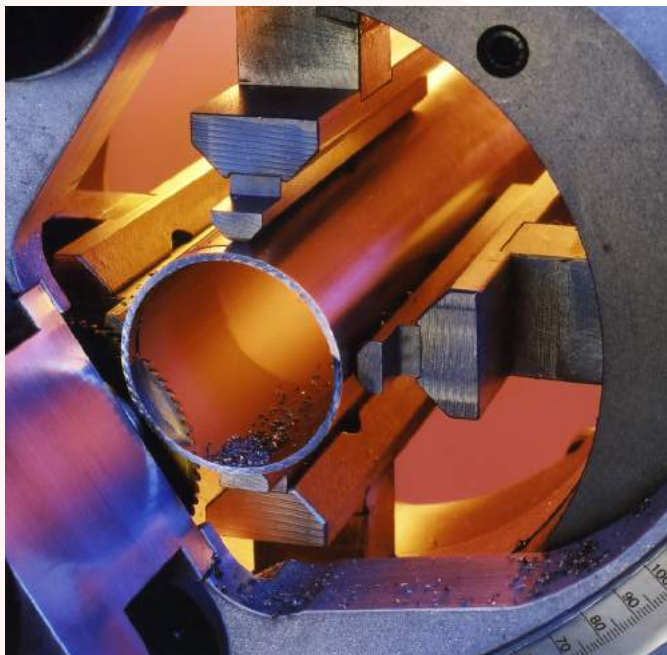
# AXXAIR's orbital cutting

**AXXAIR**  
INNOVATIVE ORBITAL SOLUTIONS

Tube preparation is essential to be able to have quality welding.

An orbital cutting machine allows a cut of high quality thanks to **the saw blade that is turning around the tube.**

The geometry of the thin wall tubes remains, therefore, intact : no tube distortion when clamping (stainless steel concentric jaws) and no deformation due to repetitiveness as the blade follows the tube section.

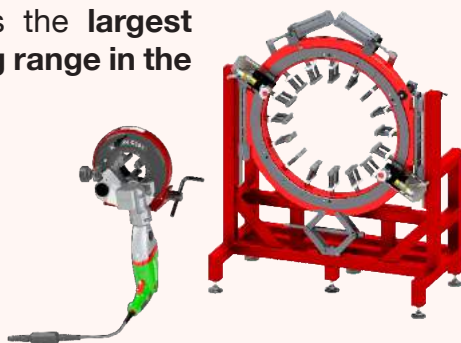


This precision is required for the welding machine to be able to close the seam and to make an adequate welding sealing.

Therefore, orbital cutting is an essential step before automatic welding.

AXXAIR offers the **largest orbital cutting range in the world !**

11 different models to cut tubes from diameter 5 to 1100 mm !



## FLEXIBILITY, PRODUCTIVITY

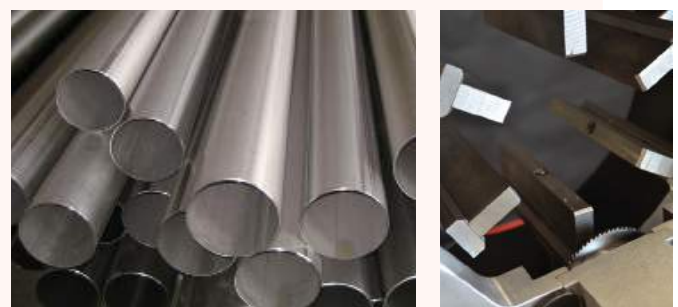
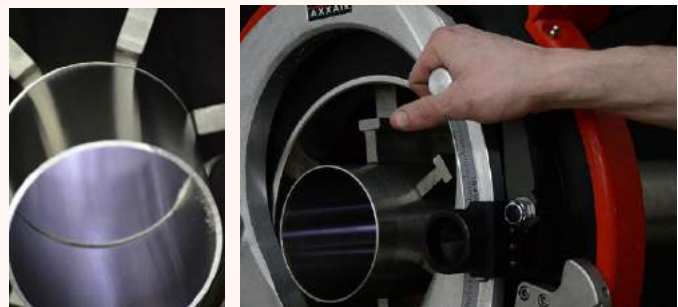
AXXAIR frames (except CC81, CC121ECO and 171ECO) are easily scalable for beveling and welding use.

## QUALITY

Cutting with no tube distortion (multi-contacts concentric clamping) ideal for thin wall stainless steel tubes. Geometric cuts (perpendicular cuts <0,25 mm) and a great surface quality (limited burring).

## PORTABILITY

Machines easy to carry and move, can be used both on site or in workshop. Ideal preparation for thin stainless steel tubes.



Please do not hesitate to contact us for all enquiries relating to orbital cutting technology.

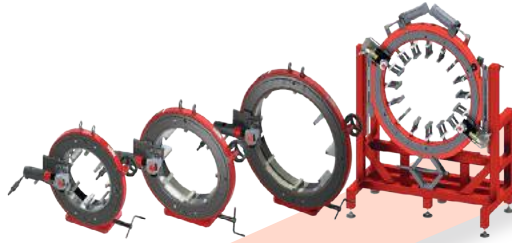
We will be glad to share our know-how with you and to devise a solution that best meets your needs!



Join **experience**



# 421- 521-721-1100



**No tube distortion**

Concentric clamping



Basic stainless steel jaws as standard

**Uptake**

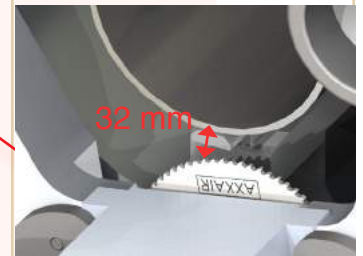
Dual output cutting motor with 2 blade positions

**Cutting quality**

Rotation handle as standard

**Reduced vibration and increased blade life**

Optimised blade to jaw distance



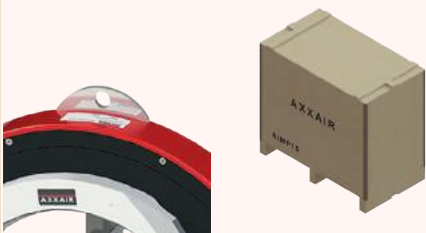
**Continuous use**

Electric rotary seal with anti-twist cable

**Cutting precision**

Perpendicular cuts < 0.4 mm

**Easy handling and transportation**



**1200W motor or pneumatic motor**  
(as required)

**Cutting capacity:**  
Up to a wall thickness of 7 mm

**Cutting range**

421	ø212 - ø422 mm 8.625 - 16 "
521	ø312 - ø522 mm 12.75 - 20 "
721	ø447 - ø725 mm 18 - 28"
1100	ø711 - ø1016 mm 28 - 40 "



# 421-521-721-1100



## Technical features:

### - Fast motor:

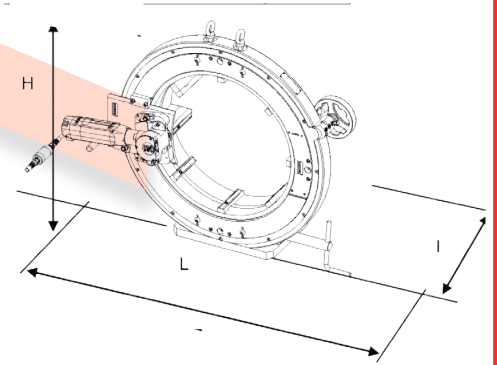
120V or 230V, 1200W, electronic speed variator with cutting compensator

Vibration level according to EN 28662 norm : <math>< 2.5m/s^2</math>, protection class : IP 20

### - Pneumatic motor:

60 to 110 rpm, air flow rate 1500 l/min at 6 bar

All motors are delivered in their individual case, including the necessary tools



	Product Code	Tube cutting machine for following diameters (in mm):		Net weight	Customs Code	Dimensions (HxLxw in mm)
		With basic jaws	With extra jaws (included)			
120V 1200W fast motor	421FS19	Ø350 - Ø422	Ø212 - Ø352	186 kg	84615 09000	802x838x315
	521FS19	Ø450 - Ø522	Ø312 - Ø452	223 kg		905x889x315
	721FS19	Ø653 - Ø725	Ø447 - Ø654	256 kg		1104x1077x315
230V 1200W fast motor	421FS29	Ø350 - Ø422	Ø212 - Ø352	186 kg	84615 09000	802x838x315
	521FS29	Ø450 - Ø522	Ø312 - Ø452	223 kg		905x889x315
	721FS29	Ø653 - Ø725	Ø447 - Ø654	256 kg		1104x1077x315
Pneu- matic motor	421PD	Ø350 - Ø422	Ø212 - Ø352	186 kg	84615 09000	802x838x315
	521PD	Ø450 - Ø522	Ø312 - Ø452	223 kg		905x889x315
	721PD	Ø653 - Ø725	Ø447 - Ø654	256 kg		1104x1077x315
	1100	On demand				

