

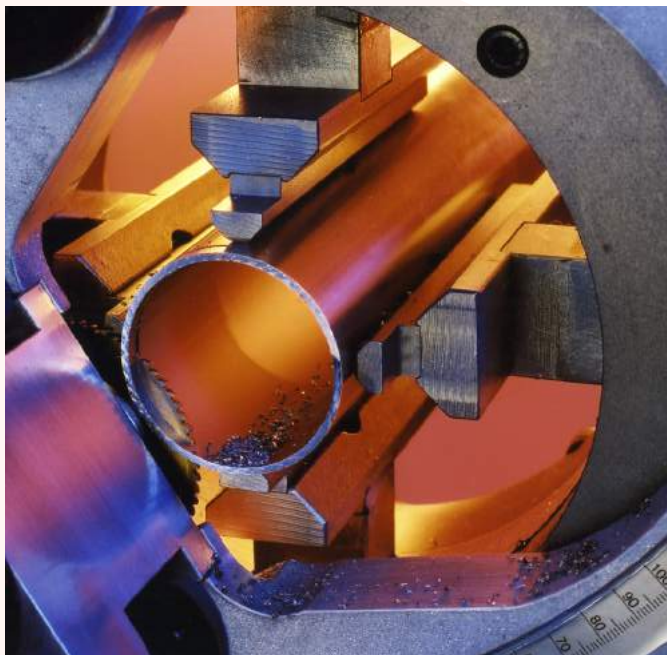
# AXXAIR's orbital cutting

**AXXAIR**  
INNOVATIVE ORBITAL SOLUTIONS

Tube preparation is essential to be able to have quality welding.

An orbital cutting machine allows a cut of high quality thanks to **the saw blade that is turning around the tube.**

The geometry of the thin wall tubes remains, therefore, intact : no tube distortion when clamping (stainless steel concentric jaws) and no deformation due to repetitiveness as the blade follows the tube section.

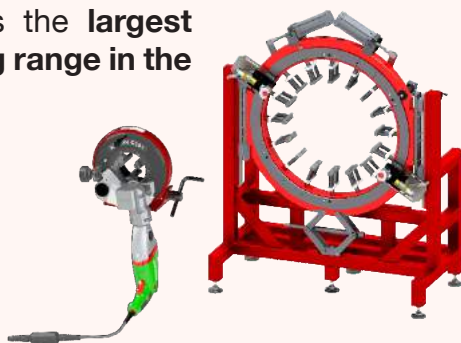


This precision is required for the welding machine to be able to close the seam and to make an adequate welding sealing.

Therefore, orbital cutting is an essential step before automatic welding.

AXXAIR offers the **largest orbital cutting range in the world !**

11 different models to cut tubes from diameter 5 to 1100 mm !



## FLEXIBILITY, PRODUCTIVITY

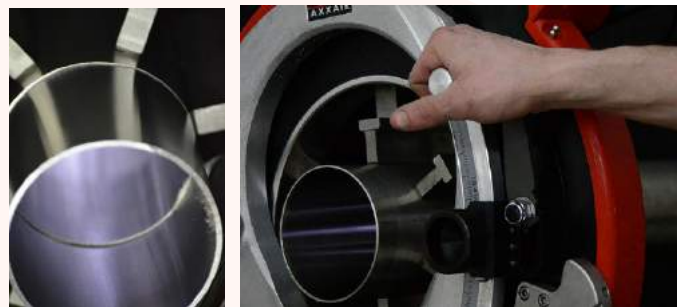
AXXAIR frames (except CC81, CC121ECO and 171ECO) are easily scalable for beveling and welding use.

## QUALITY

Cutting with no tube distortion (multi-contacts concentric clamping) ideal for thin wall stainless steel tubes. Geometric cuts (perpendicular cuts <0,25 mm) and a great surface quality (limited burring).

## PORTABILITY

Machines easy to carry and move, can be used both on site or in workshop. Ideal preparation for thin stainless steel tubes.



Please do not hesitate to contact us for all enquiries relating to orbital cutting technology.

We will be glad to share our know-how with you and to devise a solution that best meets your needs!



Join **experience**



# The ECO Cutting range

## 81M - 121ECO - 171ECO



For 20 years AXXAIR has been developing and offering scalable, flexible and reliable machines with many functions based on a patented concentric clamping system.

The frames of our cutting machines 122 - 322 (page 9-11) can be fitted with a cutting motor, a bevelling motor or with a TIG welding torch.

Our ECO range differs from this concept; it only offers a pipe cutting function for customers searching for alternatives.

We developed the ECO cutting range in order to respond to these users looking simply for a cutting solution for thin tubes.

**Machines dedicated to thin tubes < 5 mm wall thickness**

**Easy to transport and less heavy**

**Attractive prices**

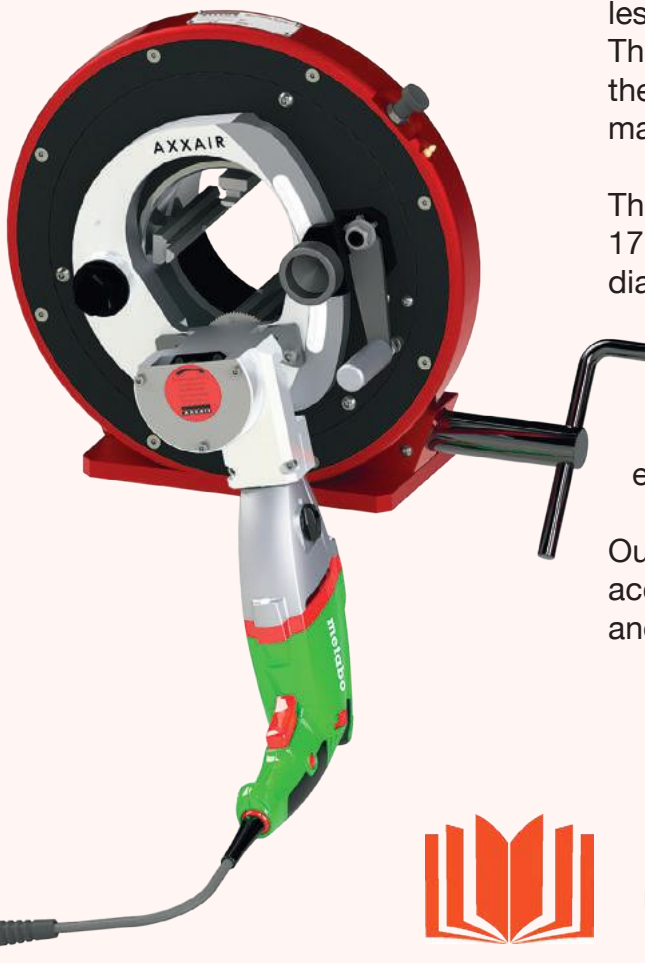
METABO motorisation offers a large speed range and a torque big enough for thin stainless steel tube applications.

This motor also has a handle that gives the possibility for the motor to be turned manually around the machine.

The design of the 121ECO and the new 171ECO, has the same system to set diameters and blade penetration as our range x22.

Thus, these machines benefit from very performing characteristics and a design especially made for our evolutive range.

Our Eco range does not come with accessories such as rotation autoline and automatic electric clamping.



For more details, accessories and the references please see pages 7 et 8 of this catalogue.



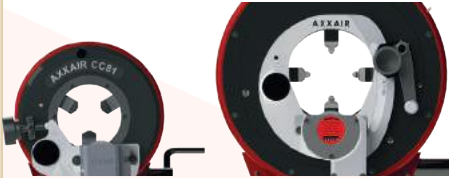
81M - 121ECO - **NEW** 171ECO

**AXXAIR**  
INNOVATIVE ORBITAL SOLUTIONS



**No tube distortion**

Concentric clamping system



Basic and extra stainless steel jaws: no pollution of the pipes

**Operator safety feature**

Penetration check feature

**Uptake**

121ECO +171ECO: dual output cutting motor with 2 blade positions

**Limited vibration and tube distortion**

Optimised blade to jaws distance



**Motor 1300W**

Adjustment via the speed changer

**Cutting capacity:**

Up to 5 mm wall thickness



**Cutting precision**

Perpendicular cuts < 0.25 mm

**Continuous use**

Electric rotary seal with anti-twist cable

**Easy handling and transportation**



**Cutting range**

81M	ø5 - ø78 mm 0.25 - 3 "
121ECO	ø5 - ø121 mm 0.25 - 4.5 "
171ECO	ø16 - ø170 mm 0.625 - 6.625 "



# 81M - 121ECO - 171ECO

**AXXAIR**  
INNOVATIVE ORBITAL SOLUTIONS

## Technical features :

METABO motorisation offers a large range of speed and an adequate torque for thin wall stainless steel tubes applications.

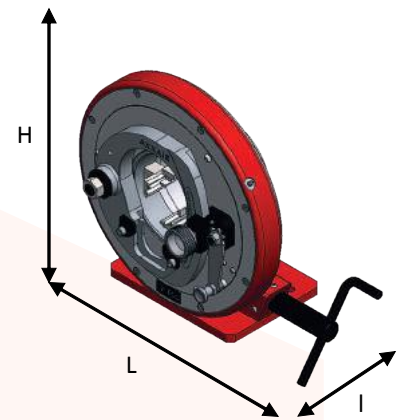
### Electric motor 1300W:

- Mechanical gearbox and electric speed variator
- 50/60 HZ
- single-phase motor



All motors are delivered in their individual case, including the necessary tools

The 81M's motor and its necessary tools are put directly in the transport box.



	Product Code	Tube cutting machine for following diameters (in mm):		Net weight	Customs Code	Dimensions (HxLxw in mm)
		With basic jaws	With extra jaws (included)			
120V 1300W	81M11	Ø5 - Ø78	-	15 kg	846150 9000	263 x 346 x 236
	121ECO1	Ø24 - Ø121	Ø5 - Ø108	38 kg		432 x 520 x 297
	<b>NEW</b> 171ECO1	Ø70 - Ø170	Ø16 - Ø118	44 kg		453 x 550 x 307
230V 1300W	81M21	Ø5 - Ø78	-	15 kg	846150 9000	263 x 346 x 236
	121ECO2	Ø24 - Ø121	Ø5 - Ø108	38 kg		432 x 520 x 297
	<b>NEW</b> 171ECO2	Ø70 - Ø170	Ø16 - Ø118	44 kg		453 x 550 x 307



Join **experience**

